

Auckland

Regional Cricket

Facilities Plan



July 2017

Executive Summary

Auckland Cricket, Counties Manukau Cricket, Northland Cricket, New Zealand Cricket and Auckland Council along with Visitor Solutions were involved in the development of the Auckland Regional Cricket Facilities Plan (2011). In 2017 Auckland Cricket undertook a review and update of the plan to reflect the changing regional population and demand of cricket.

The development of the Auckland Regional Cricket Facilities Plan identified and prioritised the cricket facility requirements for the Auckland region for both high performance and community/club cricket. The plan has a short and long term implementation focus.

Cricket in the Auckland region is a significant summer sport with over 41,000 junior through to senior male and female players. Auckland Cricket has approximately 40,000 players within their boundary. Counties Manukau Cricket has approximately 1,200 players. Northland Cricket has approximately 150 players within Warkworth and Wellsford (which fall within the Auckland Council catchment area).

It is important for both the Auckland Council and the Cricket Associations to understand the future growth of cricket within the Auckland region.

- Statistics New Zealand projects that the Auckland regional population could increase from 1.37 million in 2006 to 1.97 million by 2031. This size of population increase suggests there is likely to be change in demand.

This plan examines the current and future projected demand for games vs. the actual supply of available cricket pitches at Council grounds and grounds of schools that Auckland Cricket have a relationship with.

The plan identifies that based on the CURRENT demand:

- There are several local board areas that are already 'potentially' under supplied with cricket pitches to meet the current demand for junior and senior cricket games on a Saturday.
- There are several other local board areas that are also nearing capacity to meet current senior and junior games on a Saturday.

The plan's FUTURE demand projections indicate that:

- Central local board areas will be significantly under supplied with pitches for junior and senior Saturday games by 2033 if the current supply of wickets remains constant.
- The 'southern/eastern' local board clusters' current supply of pitches for junior and senior Saturday games will also generate a shortfall of pitches to meet projected future demand.
- The local board clusters of 'North Shore', 'Western' and 'Counties' are projected to be under supplied for junior wickets and nearing capacity for senior Saturday games by 2033.
- The key growth areas will be in the junior, non-traditional formats and social mid-week grades.

As part of the plan, the regional issues relating to cricket across Auckland were identified. The key regional cricket issues were then used to develop and prioritise areas of focus and required action.

The facilities (and related actions) that cricket in the Auckland region will require to meet their future community club needs have been identified as:

- New land required to develop additional cricket grounds
- A move towards more 'Mid-Week Play'
- Increased use of school grounds for junior/social games
- Increased training facilities
- Increased use of existing 'non cricket grounds'
- Increase the quality of cricket ground outfielders across the region
- Secure existing school arrangements
- Upgrades to key sites
- Maintain a consistent quality of wickets across the Region

In order to progress the areas of focus, together with the associated actions identified within the plan, a series of key steps will be required. These are as follows:

1. Initiate greater collaboration
2. Foster improved partnerships
3. Generate a regional voice for Cricket
4. Identify the costs associated with the hierarchy of facilities provision.

Contents Page

1.0	Introduction	5
2.0	Key Recommendations	6
3.0	Current Situation	7
3.1	Cricket Participation	7
3.2	Current Cricket Structure within the Auckland Region.	9
4.0	Demand Projections	12
4.1	Future Population Growth - Auckland Region.....	12
4.2	Future Teams	14
5.0	Projected Player Growth vs. Supply of Cricket Wickets	17
5.1	Current Surplus / Shortfall of Pitches 2016 by Local Board Cluster	17
5.2	Projected Surplus / Shortfall of Pitches 2033 by Local Board Cluster	19
5.3	Considerations to Meeting Demand.....	20
6.0	Main Regional Challenges.....	22
6.1	High Performance Considerations	22
6.2	Community Club Considerations	22
6.3	Criteria to Develop Key Facility Priorities	24
7.0	Future Priorities	25
7.1	High Performance – Hierarchy of Facilities	25
7.2	High Performance – Key Actions	25
7.3	Community Club – Hierarchy of Facilities.....	27
7.4	Community Club – Key Actions.....	28
8.0	Key Next Steps	32
	Appendix A.....	33
	Appendix B.....	39
	Appendix C.....	41

1.0 Introduction

In 2011 Auckland Cricket, Counties Manukau Cricket, Northland Cricket, New Zealand Cricket and Auckland Council were involved in the development of the Auckland Regional Cricket Facilities Plan.

Visitor Solutions was commissioned to undertake the report that would identify and prioritise the cricket facility needs for the Auckland region to help inform the Council's 10 year Long Term Plan (LTP) 2015-2025.

Cricket is a growing sport in Auckland and it is critical that sufficient quality facilities are provided in the future to cope with demand. This report updates the 2011 facilities plan, where required, and considers the growth of cricket since 2011, the impact of the 2013 census, and that 97% of the cricket demographic plays under the Auckland Cricket Association umbrella.

The report has a main focus of the community/club component of cricket.

2.0 Key Recommendations

The report identifies gaps in provision that are needed in order for cricket to continue to grow and meet the needs of participants. The following criteria have been used to develop the key facility priorities for cricket across the Auckland region.

- Increasing Cricket participation
- Equitable and consistent standard of service across the region
- Increase quality of facility provision
- Proximity to future growth population
- Sustainability of the facility
- Enhances pathways for cricket participants in Auckland.

The Auckland Regional Cricket Facilities Plan has identified and prioritised the short and long term cricket facility requirements for High Performance and Community cricket in the Auckland Region. The key recommendations are;

Regional High Performance Requirements

Short Term

The requirements of the regional high performance teams below the Auckland Aces level, require specific parks in the region to be developed further to meet their current competition and training needs.

Long Term

Auckland Cricket would like to secure a 'High Performance Centre' that will cater for the needs of elite players from regional high performance teams through to national teams for training and competition/tournaments.

Regional Community Requirements

Short Term

- | | |
|------------|--|
| Priority 1 | Consistent quality of wickets across the region |
| Priority 2 | Key sites that are extensively utilised for cricket to be upgraded |
| Priority 3 | Secure formal partnerships between Council and schools |
| Priority 4 | Increase the quality of the outfield for cricket grounds across the region |

Long Term

- | | |
|------------|---|
| Priority 1 | Development of existing non-cricket grounds |
| Priority 2 | Increase the use of school grounds for junior/social games |
| Priority 3 | Development of new training facilities to cater for Increased mid-week play |
| Priority 4 | New land required to develop additional cricket grounds |

3.0 Current Situation

Cricket in the Auckland region is a significant summer sport with over 41,000 people playing the game, both male and female, from junior through to senior.

The game is administered by three entities: Auckland Cricket, Counties Manukau Cricket and Northland Cricket. Auckland Cricket is one of the largest associations in the country with approximately 40,000 players within their boundary. Counties Manukau Cricket has approximately 1,200 players and Northland Cricket 150 players from the Auckland Council towns of Warkworth and Wellsford which fall within its catchment area.

3.1 Cricket Participation

Auckland Cricket Association Participation

Auckland Cricket has had an approximate 84.6% total increase in playing numbers over the past seven years. The table below includes all players who compete in senior, secondary school and junior competitions, the midget competition as well as social cricket such as twilight and business house competitions.

Year	Total Player Numbers
2016-17	40,172
2015-16	39,517
2014-15	32,089
2013-14	36,397
2012-13	34,066
2011-12	27,520
2010-11	21,756

Auckland Cricket Association Club Membership

The table below identifies the club membership numbers of clubs within the Auckland Cricket Association boundary. It identifies that Auckland Cricket has some of the largest cricket clubs, in terms of membership, in New Zealand.

Club Name	Playing Numbers (2016/17 season)
Auckland University	1231
Birkenhead City	456
Cornwall	1717
East Coast bays	670
Eden Roskill	712
Ellerslie	436
Grafton Untied	1491
Hibiscus Coast	258
Howick Pakuranga	1044
Kumeu	439
North Shore	602
Papatoetoe	461
Parnell	966
Suburbs New Lynn	1044
Takapuna	885
Waitakere City	665

The impact of the 2015 Cricket World Cup, hosted by New Zealand and Australia, was seen through growth in playing numbers of 23.4% across Auckland, something that was consolidated and built on by clubs in the 2016/17 season.

Counties Manukau Cricket Association Club Membership

Counties Manukau Cricket playing numbers have experienced a slight decrease since 2010/11.

The table below includes all players competing in cricket within the Counties Manukau Cricket boundary. These include the grades of senior, secondary school and junior competitions as well as social cricket such as T20.

Year	Total Player Numbers
2016-17	1,180
2015-16	1,208
2014-15	1,086
2013-14	1,160
2012-13	1,175
2011-12	1,160
2010-11	1,596

3.2 Current Cricket Structure within the Auckland Region.

Cricket throughout the Auckland region is undertaken at various levels and times. Cricket is played from junior through to senior, men and women and club to international matches.

Clubs

The key points regarding cricket clubs in the Auckland region are:

- There are 16 Premier Club in the Auckland Cricket Association region. Auckland Cricket Association has some of the largest cricket clubs in the country with membership being up to 1,717 for one of the larger clubs.
- Premier clubs are defined as clubs having senior teams playing in a senior competition.
- The clubs have a mixture of Grade Players, One Day Players, T20, Social, Youth and Junior grades.
- All premier teams use grass pitches for competitions
- All other grades use a mixture of grass and artificial pitches, with artificial being the main type of pitch used.
- Some junior grades utilise school grounds for their games.
- Mown strips are used by teams in the Year 1 to 4 grades in Auckland Cricket competitions.
- Cricket competitions are no longer just played on Saturdays, due to the growth of playing numbers cricket is now also played during the week to meet demand.
 - Last Man Stands is played mid-week
 - Cricket Blitz is played mid-week

- Social Club based Twilight Leagues are increasing in popularity during mid-week
- Community based competitions are played on Sundays
- Kilikiti competitions are played on Saturdays
- Secondary School Cricket is played on Saturday and during the week.
- Many junior grades (Year 1-4) play on Friday nights, as well as on Saturday mornings
- Rep cricket is played on Sundays
- Junior and Intermediate School Cricket is played mid-week
- Training for club and high performance teams occurs mid-week at club and satellite sites.
- High Performance teams (all games under the ACES level) rely on accessing club grounds for games and training. (The high performance teams include all junior and women's matches as well as 'A' games). Melville Park and Colin Maiden Park are key venues for Auckland High performance trainings and games.
- Secondary School Cricket organised by Auckland Cricket requires the use of some council grounds to meet demand for secondary school games.
- Cricket Blitz, a free Year 5-13 school based modified cricket competition is played mid-week across the Auckland Region by Primary, Intermediate and Secondary Schools on both school and council grounds.
- Last Man Stands is growing in popularity with 69 teams playing in mid-week competitions across Auckland.
- Auckland Cricket invest \$700,000 into their "Club is a Hub" programme annually, empowering clubs to be sustainable while fostering their own growth and development.

High Performance

The key points regarding high performance cricket in the Auckland region are:

- There are various levels of men's and women's high performance cricket games and competitions that occur within the Auckland region; they go from international and domestic, through to age group. The various levels are:
 - International – Test, One day and T20
 - Auckland Aces who play in the National Domestic competition
 - Auckland Hearts who play in the National Domestic competition
 - Auckland 'A' games
 - National and Regional Age Group Tournaments
- Auckland Cricket has proven successful at a high performance level, winning numerous titles. The below outlines results from 2013/14 to 2016/17.

Auckland Cricket High Performance Results

Team	2013/14	2014/15	2015/16	2016/17
Auckland Aces Four Day	3rd	2nd	1st	3rd
Auckland Aces One Day	3rd	2nd	4th	5th
Auckland Aces T20	4th	2nd	1st	4th
Auckland Hearts One Day	2nd	1st	1st	2nd
Auckland Hearts T20	1st	3rd	6th	3rd
'A' Men	4th	1st	6th	5th
U19 Men	3rd	1st	2nd	2nd
U17 Men	1st	2nd	2nd	1st
U21 Women	1st	1st	4th	1st

4.0 Demand Projections

The future growth of cricket within the Auckland region will be important to understand for both the Auckland Council and the Cricket Associations within the region. The section below reviews the potential growth of the Auckland region and the impact this could have on cricket playing numbers. The findings have been analysed for each Local Board area.

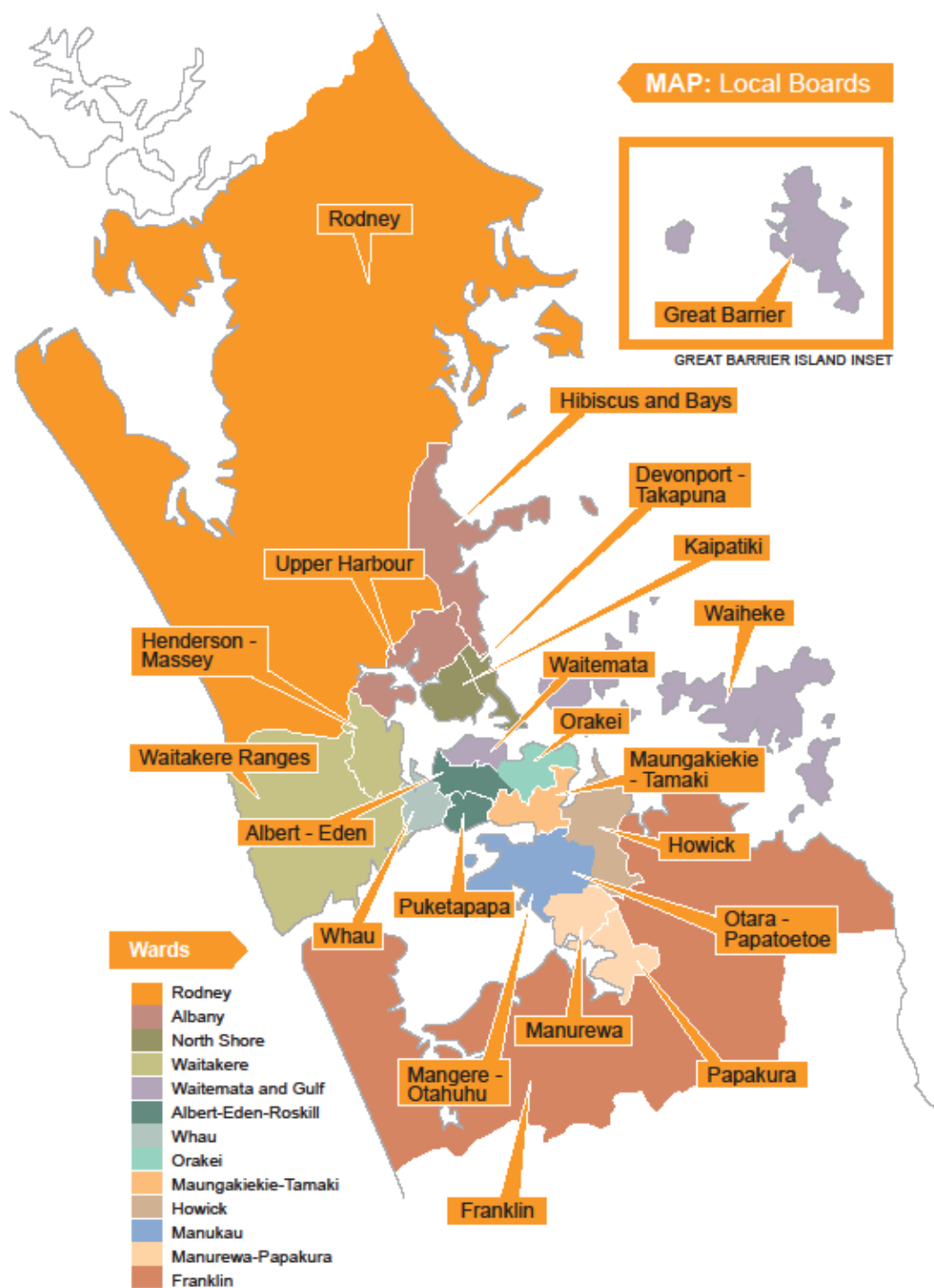
4.1 Future Population Growth - Auckland Region

The latest population projections released by Statistics New Zealand suggest that the Auckland regional population could increase from 1.37 million in 2013 to 1.82 million by 2033. The projected growth has been analysed per local board. The local boards highlighted in grey have the largest expected population increases over the next 20 years, with increases of 30,000 and above projected.

Table 1: Projected population by local board, 2013 to 2038

Local Board	2013	2018	2023	2028	2033
Rodney	57,300	64,800	71,700	78,900	85,900
Hibiscus and Bays	94,000	104,900	113,300	122,000	130,600
Upper Harbour	56,800	67,400	76,000	84,800	93,400
Kaipatiki	87,000	91,900	95,200	98,300	101,000
Devonport-Takapuna	58,500	63,200	66,100	69,000	71,800
Henderson-Massey	113,500	124,800	135,300	146,000	156,600
Waitakere Ranges	50,700	54,300	56,300	58,400	60,300
Great Barrier	950	970	980	980	990
Waiheke	8,630	9,160	9,740	10,350	10,900
Waitemata	81,300	95,400	106,900	118,700	130,200
Whau	76,700	84,900	91,600	98,500	105,400
Albert-Eden	100,000	108,700	114,700	121,000	127,00
Puketapapa	56,300	61,900	66,100	70,200	74,100
Orakei	83,700	92,600	98,000	103,600	109,100
Maungakiekie-Tamaki	73,700	81,700	89,300	97,100	104,700
Howick	135,000	147,500	157,400	167,200	176,400
Mangere-Otahuhu	75,300	81,700	86,700	92,100	97,300
Otara-Papatoetoe	80,300	86,500	91,200	96,100	100,700
Manurewa	87,000	91,800	93,900	95,800	97,100
Papakura	48,200	54,100	59,300	64,700	70,200
Franklin	68,300	78,200	87,600	97,200	106,800
Auckland region	1,373,000	1,485,200	1,599,500	1,712,900	1,824,700

Source: Monitor Auckland Website, Statistics New Zealand: Sub-national Population Projections. Oct 2012



4.2 Future Teams

The future player growth for cricket in the Auckland region has been analysed and modelled to assist with projecting how potential cricket growth could impact on the current allocation of cricket pitches across the Auckland region.

The modelling of future projected cricket growth is based on a series of assumptions. These are:

- Team Generation Rates
- Future Projected Population Growth
- Projected Cricket Player Growth
- Active Cricket Population (5 – 40 years, male and female)

4.2.1 Anticipated Growth Areas

It has been identified from previous year's membership data that key future growth areas will be in junior competitions, mid-week formats, female grades and through Asian immigration.

On the back of the Cricket World Cup 2015 held in New Zealand and Australia, playing numbers across the Auckland Region increased by 23.14%. Junior growth was particularly strong, increasing by 18.7%.

Cricket Blitz, a free social mid-week school modified cricket competition, was introduced in 2015 and has grown from 128 teams in year one to 165 teams in year three of the competition.

Short form adult mid-week cricket continues to grow in popularity seeing a 263% increase in Last Man Stands playing numbers across the Auckland Region between 2010 and 2017. In addition club run twilight competitions have grown 77% across the Auckland Region since 2010.

In 2013, almost 1 in 4 people, being 23.1% or 307,233 living in the Auckland region, identified with one or more Asian ethnic groups. Specifically, the Indian population is set to become the largest ethnic sub-group in Auckland's Asian population. There are 147,000 Indian residents, being an increase of 43% from 2006 to 2013.

The recent 'Insights on Increasing Participation in Sport and Recreation' survey by Active Auckland indicated that 78% of Auckland adults take part in sport and recreation in any given week with 67% of Asians participating. Given this number of active Asian people in Auckland there is an opportunity to tap into this interest to boost the numbers of those that play cricket either in a structured way linked to clubs or in a more unstructured social way.

4.2.2 Active Cricket Population

The active population has been defined as both males and females aged 5 – 40 years. It is acknowledged that some players are active beyond the age of 40, however this age range includes the majority of participants to enable consistent analysis.

The below table identifies the projected growth in the active population from 2013 to 2033.

Age	Auckland Region	2013	Auckland Region	2033
5-9 Years	102,070	14%	128,200	13%
10-14 Years	99,570	13%	122,400	13%
15-19 Years	108,750	15%	114,730	12%
20-24 Years	117,740	16%	136,480	14%
25-29 Years	108,550	15%	140,040	14%
30-34 Years	105,060	14%	156,480	16%
35-39 Years	99,320	13%	175,940	18%
Total 'Active' Ages	741,060	100%	974,270	100%

4.2.3 Team Generation Rates

The team generation rates examine the active population of a particular age bracket per area versus the number of teams within the age bracket. The outcome helps to identify the current population required to create one cricket team per age bracket within that area.

The team generation tables below illustrate that cricket is more popular for males in the Waitemata, Orakei and Albert-Eden Local Board areas and more popular for females in the Orakei Local Board area.

Male Team Generation Rates by Local Board

Local Board	Midget (Yr 1-4)	Junior (Yr 5 to 8)	Youth	Senior
Rodney	717	276	650	263
Hibiscus and Bays	592	359	1785	1920
Kaipatiki	168	131	710	318
Devonport-Taka	129	164	N/A	482
Upper Harbour	165	125	1105	739
Henderson-Massey	722	788	4240	938
Waitakere Ranges	N/A	920	N/A	1542.5
Waitemata	75	79	900	579
Whau	170	211	690	674
Maungakiekie-Tamaki	53	57	380	607
Puketapapa	251	244	428	262
Orakei	42	58	326	157
Howick	174	175	890	860
Otara-Papatoetoe	1146	198	583	985
Manurewa	N/A	732	N/A	1169
Papakura	N/A	67	N/A	419

Source: NZ Census data 2013 and 2012/2013 ACA Playing data

Female Team Generation Rates by Local Board

Local Board	Midget (Yr 1-4)	Junior (Yr 5 to 8)	Youth	Senior
Rodney	2030	N/A	N/A	N/A
Hibiscus and Bays	N/A	N/A	N/A	N/A
Kaipatiki	2650	289	1370	7080
Devonport-Taka	1700	1760	2000	N/A
Henderson-Massey	4050	638	2070	17,250
Waitemata	1330	1220	2950	20,070
Whau	N/A	2170	N/A	N/A
Albert-Eden	2960	203	872	16,820
Puketapapa	N/A	1650	1055	8950
Orakei	672	235	1240	10,870
Howick	4140	1113	4970	N/A
Otara-Papatoetoe	3200	N/A	3380	6315

Source: NZ Census data 2013 and 2012/2013 ACA Playing data

The 2013 team generation rates can then be used against the projected populations per age bracket to assist with identifying the potential increase in future cricket team numbers.

5.0 Projected Player Growth vs. Supply of Cricket Wickets

The section below examines the current and future projected demand for games vs. the actual supply of available pitches for cricket at Council grounds and schools that Auckland Cricket have a relationship with. The demand for current and future games is focused on the AM (morning cricket) and PM (afternoon cricket) for Saturday games only. Saturday play is currently the peak time in which cricket is undertaken. The future (2033) demand for games is based on the player growth projections.

The following tables should be seen as a guide to assist in the decision making process in determining the priority areas.

5.1 Current Surplus / Shortfall of Pitches 2016 by Local Board Cluster

The table below identifies the **CURRENT** surplus/shortfall of pitches to meet current demand for games per cluster of local boards for Saturday games.

Current Surplus / Shortfall of Pitches 2016/2017

	Demand - Games		Supply – Pitches		Surplus / shortfall	
	Sat AM	Sat PM	Sat Am	Sat PM	Sat AM	Sat PM
Rodney - Rodney	2	3.5	7	7	5	3.5
North Shore - Hibiscus and Bays - Upper Harbour - Devonport - Takapuna - Kaipatiki	21.5	27	31	40	9.5	13
Western - Waitakere Ranges - Henderson - Massey - Whau	16	26	19	21	3	-5
Central - Albert-Eden - Puketapapa - Waitemata - Orakei - Maungakiekie-Tamaki - Waiheke	64	67.5	68	73	4	5.5
Southern / East - Mangere-Otahuhu - Howick - Otara-Papatoetoe	14.5	17.5	18	20	3.5	2.5
Counties - Manurewa - Papakura - Franklin	30	20	30	33	0	13

Note:

Includes AM Year 5-7. PM Year 8 to Prem Men, Business House, Onehunga Cricket, School games on council grounds

Demand = # of teams/2 based on home and away

Includes all wickets as if they were online during the summer

Excludes wickets deemed unsafe due to the proximity of neighbouring wickets

Excludes Warkworth teams and grounds in the Rodney Local Board

This table clearly identifies that all of the local board clusters, with the exception of North Shore, are nearing capacity for junior and senior Saturday play.

5.1.1 Current Surplus / Shortfall of Pitches 2016/2017 by Individual Local Board

The table below focuses on each individual local board and identifies the **CURRENT** surplus/shortfall of pitches to meet current demand for the Saturday time slot.

Current Surplus / Shortfall of Pitches 2016/2017

By Local Boards	Saturday AM Surplus /Shortfall	Saturday PM Surplus /Shortfall
Rodney	5.0	3.5
Hibiscus and Bays	4.5	6.5
Upper Harbour	4.0	2.5
Devonport-Takapuna	3.0	7.0
Kaipatiki	-2.0	-3.0
Waitakere Ranges	2.0	2.0
Henderson-Massey	-3.5	-3.0
Whau	4.5	-4.0
Albert-Eden	8.0	13.0
Puketapapa	3.5	-1.5
Waitemata	6.5	1.0
Orakei	-7.0	-2.0
Maungakiekie - Tamaki	-7.0	-5.0
Howick	-1.0	1.0
Otara-Papatoetoe	-0.5	-2.5
Mangere- Otahuhu	5.0	4.0
Manurewa	2.5	5.0
Papakura	0	3.5
Franklin	-2.5	4.5

This table identifies that there are several local boards that are under supplied for cricket pitches to meet current demand for junior and senior cricket games on a Saturday. There are also several other local boards that are nearing capacity to meet current senior and junior games on a Saturday. Currently the under supply for demand for cricket pitches in some areas is being met by teams playing 'away' from their home grounds in neighbouring areas that do have capacity.

Key Note: It should be noted that the current capacity is being met by using school grounds for some junior grades. Auckland Cricket utilises 39 school grounds for cricket. School grounds have been included in the current cricket pitch numbers. Without the school pitches the ability to meet the current junior cricket needs would be seriously compromised in some areas.

5.2 Projected Surplus / Shortfall of Pitches 2033 by Local Board Cluster

The following table identifies the **PROJECTED** surplus/shortfall of pitches to meet future demand for Saturday games per local board cluster.

Projected Surplus / Shortfall of Pitches 2033

	Demand - Games		Supply – Pitches		Surplus / shortfall	
	Sat AM	Sat PM	Sat Am	Sat PM	Sat AM	Sat PM
Rodney - Rodney	8	20.5	7	7	-1	-13.5
North Shore - Hibiscus and Bays - Upper Harbour - Devonport - Takapuna - Kaipatiki	71	64	31	40	-44	-24
Western - Waitakere Ranges - Henderson - Massey - Whau	31	27.5	19	21	-13	-9.0
Central - Albert-Eden - Puketapapa - Waitemata - Orakei - Maungakiekie-Tamaki	175	130	68	73	-137	-57
Southern / East - Mangere-Otahuhu - Howick - Otara-Papatoetoe	48.5	29.5	18	20	-30.5	-9.5
Counties - Manurewa - Papakura - Franklin	79	39	30	33	-49	-6

The table identifies that the Central area is projected to be significantly under supplied with pitches for junior and senior Saturday games in 2033 if the current supply of wickets remains constant.

All other local board clusters will be greatly under supplied with pitches for junior and senior Saturday games by 2033 if the current supply of wickets remains constant.

5.2.1 Projected Surplus / Shortfall of Pitches 2033 by Individual Local Board

The table below focuses on each individual local board and identifies the **PROJECTED** surplus/shortfall of pitches to meet future demand for Saturday play.

Projected Surplus / Shortfall of Pitches 2033

Local Board	Saturday AM Surplus / Shortfall	Saturday PM Surplus / Shortfall
Rodney	-1.0	-13.0
Hibiscus and Bays	-1.0	-5.0
Upper Harbour	-13.0	-4.0
Devonport-Takapuna	-7.0	1.0
Kaipatiki	-22.0	-16.0
Waitakere Ranges	3.0	1.0
Henderson-Massey	-9.0	-9.5
Whau	-7.0	0
Albert-Eden	8.0	13.0
Puketapapa	-2.0	-15.0
Waitemata	-10.0	-18.0
Orakei	-52.0	-31.0
Maungakiekie - Tamaki	-51.0	-5.0
Howick	-27.0	-6.0
Otara-Papatoetoe	-7.0	-8.0
Mangere-Otahuhu	3.0	4.0
Manurewa	0	-2.0
Papakura	-26.0	9.0
Franklin	-23.0	-13.0

This table identifies that the majority of local boards are projected to be under supplied for cricket pitches to meet projected demand for junior and senior cricket games on a Saturday. The remaining local boards are nearing, or at, capacity for projected junior and senior games.

5.3 Considerations to Meeting Demand

The outcomes of the demand model indicates that there will be an undersupply of cricket pitches to meet projected demand for junior and senior cricket games on a Saturday only.

There are several important considerations that will need to be taken into account when determining the potential solutions to meet the future demands for Saturday AM and PM games.

The assumption that cricket can be moved to play at alternative times throughout the week needs to consider the following information.

The key considerations are:

- Training for club and high performance teams occurs during mid-week over a 5 day period at club sites.
- High Performance games (all games under the ACES) are currently utilising club grounds for games.
- Commercial Competition is played mid-week (69 teams).
- Club-Based Twilight Leagues are played mid-week (77 teams across various clubs).
- Social Twilight Leagues are increasing in popularity during mid-week.
- Community based competitions are played on Sundays (22 teams).
- Secondary School Cricket organised by Auckland Cricket requires the use of some council grounds to meet demand for secondary school games.
- Secondary School Cricket is also played on Saturday and during the week.
- Primary and Intermediate School cricket is playing after school during the week.
- Cricket Blitz is played mid-week (161 Teams)
- Social casual cricket e.g. tape ball or gully cricket is played both mid-week and on the weekend.

It is also important to note that the local participation rate is influenced by a number of factors including:

- People are choosing to play at clubs other than their local club.
- Socio economic factors (e.g. cost, travel times, accessibility).
- Development programmes and activities at the club.
- Availability of other competitions locally.
- Quality of the facility.
- Capacity of the club to accommodate additional teams/competitions.
- Immigration.

The above points have to be taken into consideration when developing the potential projects to meet projected future demand.

6.0 Main Regional Challenges

6.1 High Performance Considerations

6.1.1 Test Match Venue

- Eden Park is the only suitable venue with current Warrant of Fitness standards capable of hosting Test Match Cricket.

6.1.2 High Performance Facilities

- There is a lack of grass practice pitches across the region for high performance and premier club teams to access.
- The current grass practice pitches at Eden Park are utilised solely by the Auckland Aces and no other high performance teams.
- There is also a lack of indoor practice space for high performance teams in the Auckland area, especially the Central and North Shore regions.
- Auckland Cricket Association's only Indoor High Performance Cricket Centre is at capacity in terms of use.
- There is a need for an additional High Performance Cricket Centre in the central part of the region. This centre would accommodate 2 to 3 ovals for all high performance teams of the region under Auckland Aces level, and for high performance tournaments.

6.2 Community Club Considerations

6.2.1 Minimum Standard of Cricket Pitches (Grass and Artificial)

- The quality of premier grass and artificial pitches maintained by the Council are generally of good to high standard.
- The quality of grass pitches outside of Auckland Premier Club Cricket varies with some considered at a dangerous level.
- Design specifications for artificial and grass wickets can be located in Appendix A and B.

6.2.2 Quality of Premier Outfields

- The quality of outfields at some cricket ovals has been falling over recent years, leading to sub-standard outfields at these venues.
- Issues such as increased usage by other summer codes and the intensification of junior and senior play on cricket ground outfields, are potential contributors to this issue.

6.2.3 Key Sites Need Upgrading

- There are key cricket sites within the region that cater for extensive cricket use.
- Examples of this are, Melville Park, Onewa Domain, Auckland Domain, Waikaraka Park and Victoria Park which are used extensively throughout both the week and weekends for competitions (social and competitive) and training, as well as being key event sites and casual recreational areas for the public.
- The Auckland Domain has 19 artificial pitches that are used to full capacity every weekend for junior, secondary school and senior cricket. The ground is also used heavily midweek for social adult twilight cricket. With its central location and large capacity this ground is critical to the successful operation of cricket in this city. However there are concerns with the quality and safety of the outfield, overlapping boundaries and artificial pitches. This has resulted in a lower quality standard of pitches and outfield during the cricket season.
- These same parks are also used extensively during the winter season by various other codes as well.
- A focus to upgrade these parks is essential to provide a 'quality experience' to a large number of players.
- There are a number of clubrooms and changing facilities that are tired and old that require work to bring them up to standard. Suburbs New Lynn at Ken Maund Park is an example of this.
- There are a number of net facilities across the Auckland Region that are deemed unsafe and not up to Auckland Cricket's build specifications (Appendix C) or Health and Safety Standards. As a result this limits the availability of training facilities across Auckland.
- There are a number of cricket wickets in the Auckland Region with severe overlapping boundaries, resulting in adjacent wickets being unavailable for use.
- Clubs are at, or close, to capacity for training facilities. This is only going to become worse as playing numbers grow.
- Areas of high growth such as Hibiscus Coast and Flat Bush need training and changing facilities to be able to cope with population growth.

6.2.4 Access to grounds to meet Junior and Social Growth

- The majority of the increase in participation numbers has been at the junior and social level.
- This has led to pressure to try and accommodate new junior and social teams on already busy cricket grounds or to find alternative venues.

6.2.5 School Facilities

- Cricket clubs in the Auckland region rely on the use of local school facilities for training and playing for their junior teams.
- There are current issues with the inability to get long term agreements for use of school fields.
- There is a lack of access to toilet and changing facilities at school sites
- There are varying standards of artificial pitches at school grounds.

- There is an increase in the number of schools approaching Council to utilise Council grounds for school matches.

6.2.6 Impact on the 'Regeneration' period for Summer Season Grounds

- The regular field closures during the winter sports season has forced some winter codes to extend their seasons later than normal to allow for catch up games to be completed.
- Poor weather during the regeneration period can impact on the ability to complete the appropriate ground maintenance during the gap between the winter and summer seasons.
- Changing weather conditions mean that we are getting a wet spring causing delays to the start of the cricket season.
- A two week shift in the 'summer' and 'winter' seasons would have a huge impact on ground preparation and renovations, and would create better links with schools.

6.3 Criteria to Develop Key Facility Priorities

The following criteria have been used to develop the key facility priorities for cricket across the Auckland region.

- Increasing Cricket participation
- Equitable and consistent standard of service across the region
- Increase quality of facility provision
- Proximity to future growth population
- Sustainability of the facility
- Enhances pathways for cricket participants in Auckland.

7.0 Future Priorities

The following section outlines the key facility priorities for cricket across the Auckland region. The section is broken down into 'High Performance' and 'Community Club' areas of cricket as well as long and short term actions.

7.1 High Performance – Hierarchy of Facilities

The below table summarises the hierarchy of facilities that cricket in the Auckland region will require to meet their future high performance needs.

Hierarchy Facility	Facility Name	Potential Options/Solutions
International - Test	Eden Park preferred by Auckland Cricket	New Zealand Cricket, Auckland Cricket, Auckland Council and the RFA to continue to discuss the future of Test Match Cricket
National Level - Domestic First Class	Eden Park Colin Maiden Park B block a secondary option	Upgrade Sightscreens. Upskill ground staff.
National Level - Women's - Men's	Melville Park	Improved practice facilities with grass training blocks Replace artificial wickets with grass blocks Lease of building to Auckland Cricket. Redevelopment of the outfield
National Level - Age Group	Colin Maiden Park	Review the focus of Colin Maiden Park for cricket
	Lloyd Elsmore Park	Maintain outfield and wickets to a high standard to cater for National Tournaments and A team cricket. Reinstate 5th grass wicket as a training block only

7.2 High Performance – Key Actions

The below information identifies the list of actions from a high performance perspective and identifies both long term and short term actions.

7.2.1 Short Term

Key Focus: Regional High Performance Requirements

The requirements of the regional high performance teams below the Auckland Aces level, require specific parks to be developed further to meet their current competition and training needs.

The needs are for age group and regional high performance teams (male and female) from the Auckland Cricket and Counties Manukau Associations.

Auckland Cricket Association High Performance Requirements

Action:	Melville Park <ul style="list-style-type: none">▪ Upgrade practice nets▪ Upgrade associated facilities▪ Develop grass practice nets▪ Replacement of artificial wickets with grass wickets▪ Lease building club rooms to Auckland Cricket▪ Redevelopment of outfield
Action:	Colin Maiden Park <ul style="list-style-type: none">▪ Auckland Cricket to use Colin Maiden Park for age group high performance cricket.▪ Indoor net facilities

Counties Manukau Cricket Association High Performance Requirements

Action	Mountfort Park (Weymouth Oval) <ul style="list-style-type: none">▪ The associated changing facilities at Weymouth Oval require upgrading▪ Upgrade the practice nets
Action:	Massey Park (Waiuku) <ul style="list-style-type: none">▪ Maintain the outfield to a quality that is safe and consistent.

7.2.2 Long Term

Key Focus Test Venue

Auckland Cricket is committed to hosting test match cricket in Auckland and wants to work collaboratively to ensure that it is played regularly at the most appropriate venue.

Action:	New Zealand Cricket, Auckland Cricket, Auckland Council and Regional Facilities Auckland (RFA) to work together to ensure test cricket is played in the Auckland region.
----------------	--

Key Focus High Performance Centre/Centre of Excellence

The 'High Performance Centre' will cater for the needs of elite players from regional age group high performance through to national teams for training and competition/tournaments.

Further dialog should continue with New Zealand Cricket and other Auckland stakeholders (e.g. Cricket Associations within Auckland, Auckland Council, RFA) to determine if national and regional alignment and synergies exist.

Action:	A new 'Centre of Excellence' is developed as the venue for high performance for the Auckland region.
Action:	The 'Centre of Excellence' should include: <ul style="list-style-type: none">▪ Indoor Practice Pitches▪ Covered Grass Practice Pitches

	<ul style="list-style-type: none"> ▪ Access to three cricket ovals for tournament use ▪ Access to 'Athlete Support Systems' amenities (gym, pool etc.)
Action:	Review Colin Maiden Park as potential site for the proposed 'Centre of Excellence'.
Action:	Discuss with New Zealand Cricket to determine the potential funding sources for a high performance centre in Auckland.

7.3 Community Club – Hierarchy of Facilities

The below table summarises the hierarchy of facilities that cricket in the Auckland region will require to meet their future community club needs.

Hierarchy Facility	Facility Name	Potential Options/Solutions
Club - University CC	Colin Maiden	Review the focus of Colin Maiden Oval for cricket Indoor training facilities
Club - North Shore CC	Devonport Domain	Reconfiguration of park and cricket wickets to enable greater use Indoor training facilities
Club - Hibiscus Coast	Metro Park	Invest in training facilities Invest in club rooms and changing facilities
Club - Suburbs New Lynn CC	Ken Maunder Park	Renewal of clubrooms and changing facilities
Club - Kumeu CC	Huapai Domain	Invest in additional grass block/s
Club - Takapuna CC	Onewa Domain	Invest in grass block next to #2 artificial wicket Sand slitting of #1 field
Clubs	All Clubs	Meet adopted 'minimum standards' for grass and artificial pitches and outfields
School Grounds	School Partnerships grounds	Meet adopted 'minimum standards' for grass and artificial pitches and outfields
Community	Waikaraka Park	Installation of concrete based artificial wickets adjacent to grass blocks
	Scotts Point Reserve	Development of cricket wickets
	Pt England Reserve	Covering of two concrete kilikiti wickets
	Sir Barry Curtis	Invest in training facilities Invest in toilet/changing facilities
	Auckland Domain	Cricket pitches and outfields requiring upgrading
	North Shore Region	Establishment of ground or grounds on the North Shore capable of 2-3 grass ovals.

7.4 Community Club – Key Actions

The below information identifies the regional cricket actions from a community club perspective and identifies both long term and short term actions.

7.4.1 Short Term

Priority 1 Consistent Quality of Wickets across the Region

Action:	Council contractors continue to meet a minimum standard for grass and artificial pitches across the Auckland region from junior to premier club cricket.
Action:	The current 'Auckland Cricket Grounds Policy' (Appendix D) is continued to be used as the minimum 'level of service' for grass and artificial pitches.

Priority 2 Key Sites to be upgraded

There are key cricket grounds within the Auckland region that are extensively utilised for cricket and need to be upgraded.

Action:	Auckland Domain <ul style="list-style-type: none">▪ Auckland Domain undertakes a master plan for the appropriate layout of cricket wickets▪ Upgrade existing artificial pitches to meet minimum standard.▪ Maintain the outfield to a quality that is safe and consistent.
Action:	Victoria Park <ul style="list-style-type: none">▪ Maintain the outfield to a quality that is safe and consistent.▪ Cox's Bay Park which acts as the 'over flow' for Victoria Park should be reviewed to maximise cricket access.
Action:	Waikaraka Park <ul style="list-style-type: none">▪ Further develop the council land adjacent to the park to meet the needs of junior cricket. This will assist with the pressure that the Cornwall Cricket Club is facing with capacity issues at their home ground.▪ Installation of concrete based artificial wickets adjacent to the grass wickets
Action:	Sir Barry Curtis Park <ul style="list-style-type: none">▪ Invest in practise facilities.▪ Invest in toilet/changing room facilities▪ Invest in re-instating the grass wicket blocks
Action:	Metro Park <ul style="list-style-type: none">▪ Invest in practise facilities.▪ Invest in toilet/changing room facilities

Action:	Colin Maiden Park <ul style="list-style-type: none"> Invest in indoor facilities
Action:	Scotts Point Reserve <ul style="list-style-type: none"> Development of park to include cricket wickets
Action:	Pt England Reserve <ul style="list-style-type: none"> Development of kilikiti wickets into cricket wickets
Action:	Huapai Reserve <ul style="list-style-type: none"> Invest in additional grass wickets
Action:	Onewa Domain <ul style="list-style-type: none"> Invest in a grass block adjacent to the #2 artificial wicket Sand slit #1 field
Action:	Devonport Domain <ul style="list-style-type: none"> Invest in indoor facilities Realignment of park to maximise use
Action:	Ken Maunder Park <ul style="list-style-type: none"> Renewal of clubrooms and changing facilities
Action:	North Shore Ground <ul style="list-style-type: none"> Establishment of ground/s capable of 2-3 grass ovals

Priority 3 Secure Existing School Arrangements

Action:	Council includes the use of school fields for summer public use as part of any 'School Partnership Policy' review.
Action:	<p>Council undertakes formal partnerships with existing schools who allow Auckland Cricket use of their grounds, in high priority areas, to obtain long term access agreements for cricket use.</p> <p>The junior priority local board areas are:</p> <ul style="list-style-type: none"> Devonport - Takapuna Henderson - Massey Albert-Eden Puketapapa Waitemata Otara-Papatoetoe Orakei Hibiscus and Bays Kaipatiki Howick
Action:	The minimum standard for artificial pitches that is mentioned in this report to be adopted to school partnership pitches.
Action:	Access to toilets and changing facilities on school grounds are negotiated as part of school partnerships.
Action:	The priority for school partnerships will be for use by junior and social teams.

Priority 4 Increase the quality of the outfields for cricket grounds across the region

Action:	Summer codes requirements (such as Cricket) be reviewed for future sports fields maintenance planning.
Action:	Future upgrades of outfields consider grass types that are appropriate for both winter and summer codes requirements.
Action:	Approximate 'regeneration period' between winter codes ending and summer codes starting is implemented regionally.
Action:	Winter codes season are not extended to the impact of summer codes
Action:	Consideration is taken to changing the dates of Summer and Winter seasons. Starting the Summer season later and extending the season into April

7.4.2 Long Term

Priority 1 Use of existing non-cricket grounds

Action:	Identify existing non cricket grounds in areas of projected high demand and potential deficit of cricket wickets that could be suitable for cricket use (in terms of size and ability to co-exist with existing codes using the ground).
Action:	<p>The priority local boards where the use of non-traditional cricket land will be required to meet cricket's long term needs will be:</p> <p>Senior and Junior Cricket Priority Local Boards:</p> <ul style="list-style-type: none"> ▪ Henderson ▪ Albert - Eden ▪ Puketapapa ▪ Waitemata ▪ Otara - Papatoetoe ▪ Orakei ▪ Kaipatiki <p>Junior Cricket only Priority Local Boards:</p> <ul style="list-style-type: none"> ▪ Hibiscus and Bays ▪ Maungakiekie – Tamaki ▪ Howick ▪ Devonport - Takapuna

Priority 2 Increase the use of school grounds for junior/social games

Action:	Develop and implement formal council partnerships with schools for the use of summer sports on school grounds.
Action:	Future school partnerships are part of 'minimum standard policy' for artificial pitches on school grounds

Action:	<p>The priority local boards where future school partnerships will be required to meet crickets long term needs are:</p> <ul style="list-style-type: none"> ▪ The priority areas are outlined in Priority 1 above
----------------	--

Priority 3 Mid-Week Play

Action:	Social and junior cricket would be the priority to be moved from traditional Saturday play.
Action:	As mid-week play increases consideration needs to be given to increasing the amount of training facilities to cope with the supply issues caused by mid-week play.

Priority 4 New land required to develop additional cricket grounds

Action:	<p>Identify future land banking opportunities in areas of projected high demand and potential deficit of cricket pitches in the future.</p> <p>The priority local boards where additional land will be required to meet crickets long term needs will be:</p> <ul style="list-style-type: none"> ▪ Devonport - Takapuna ▪ Henderson - Massey ▪ Albert - Eden ▪ Puketapapa ▪ Waitemata ▪ Otara – Papatoetoe ▪ Upper Harbour ▪ Hibiscus – Takapuna ▪ Rodney <p>It is anticipated that land banking opportunities in many of the above identified local boards will be difficult to do with minimal cost effective land being available. However any potential future recreational open space in these areas should take into account the potential to provide cricket opportunities through the ‘New Technologies’ as identified in the report.</p>
----------------	--

8.0 Key Next Steps

The development of the Auckland Regional Cricket Facilities Plan has identified and prioritised the cricket facility requirements for the Auckland region, in both the short and long term.

In order to progress the areas of focus and their associated actions, which are identified within the plan, a series of key steps will be required to be undertaken to assist with implementation. The key steps identified are:

- **Greater Collaboration**

The key stakeholders of the various regional cricket associations, national cricket association and the various Council departments and organisations will be required to work together even more closely.

The relevant stakeholder organisations should develop a 'project team' to focus specifically on the implementation of this plan.

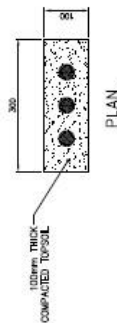
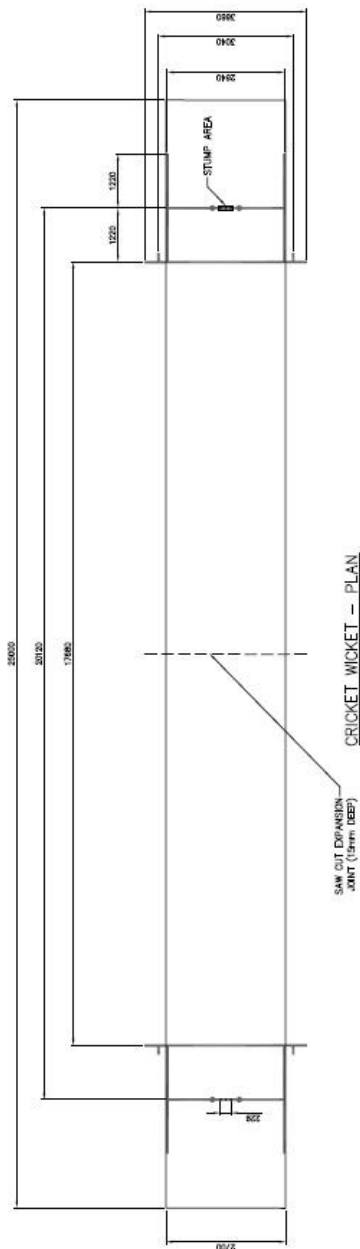
- **Improved Partnerships**

Various stakeholders such as clubs, schools, and other organisations will be required to develop or formalise partnerships. These partnerships should be fostered or encouraged by the 'project team'.

- **Identifying Costs Associated with the Hierarchy of Facilities Provision**

The costs associated with the proposed hierarchy of cricket facilities in the Auckland region will need to be developed once a thorough review of the priority actions has been undertaken.

Key considerations such as site location, size, and an agreed detailed description of facility components, will need to be thoroughly evaluated during a site by site analysis for both the 'High Performance' and 'Club/Community' sites.

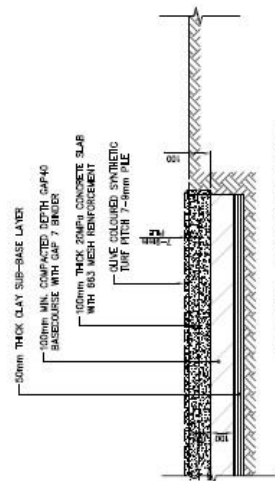


PLAN

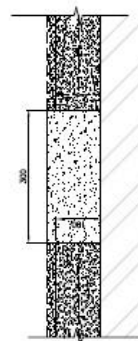
DESIGN APPROVED BY
AUCKLAND CRICKET
ASSOCIATION

NOTES:

1. CONCRETE MIXTURES ARE TO BE COMPACTED AND FINISHED TO MEET AASHTO SPECIFICATIONS ACCORDING TO AASHTO CRACKED ASSOCIATION'S BEST PRACTICE STANDARDS DATED AUGUST 2016.
2. ALL CONCREIT TO BE MIN. 20MPH AT 28 DAYS STRENGTH.
3. CONCRETE SLAB TO BE FINISHED WITH STEEL TROWEL AND COMPACTED.
4. RETH MARKINGS WILL BE 2mm WIDE USING WHITE ROAD MARKING PAINT.
5. CROSSFALL OF RAKE TO MATCH SURFACE.
6. ARTIFICIAL TURF TO BE Laid IN TO TWO HALVES, GRAB TO FACE MATINGS ON THE HALF WAY JAIN BEING SECURED THROUGH MANUFACTURERS BACKING TAPE TUFF PINS TO THE SUBGRADE, NAILS TO THE SUBGRADE AND Pinned TO THE Edges.




ARTIFICIAL TURF END SECTION



ELEVATION

STUMP AREA DETAIL
1:10 • A3

 <p>Auckland Council Te Kaitiaki o Te Waipounamu</p>	<p>AUCKLAND COUNCIL SPORT PARKS DESIGN GUIDELINES BUILT ELEMENTS DETAILS</p>	<p>ARTIFICIAL CRICKET PITCH PERMANENT CONCRETE BASE</p>	<table><tr><td>DRAWING NO. 152</td><td>SP 16011</td><td>SHEET NO.</td><td>1</td></tr><tr><td colspan="2">SHEET TITLE</td><td>AS SHOWN</td><td>DATE</td></tr><tr><td colspan="2">APPROVED</td><td colspan="2">05/04/17</td></tr><tr><td colspan="2">ID, KAIKIA</td><td colspan="2">SPORTS PARKS</td></tr></table>	DRAWING NO. 152	SP 16011	SHEET NO.	1	SHEET TITLE		AS SHOWN	DATE	APPROVED		05/04/17		ID, KAIKIA		SPORTS PARKS		<p>DISCLAIMER:</p> <p>AUCKLAND COUNCIL'S GOAL WAS BEST MANAGEMENT PRACTICES, AND NOT AN INFORMATION GUIDE ONLY, AND NOT TECHNICAL OR COMPLIANCE ADVICE. IT IS FOR INFORMATION PURPOSES ONLY AND NOT TO BE CONSIDERED A CONTRACT. THE USER OF THIS DOCUMENT IS ADVISED TO CONSULT WITH AN APPROPRIATE PROFESSIONAL FOR ADVICE ON THE DESIGN AND CONSTRUCTION OF THE PROJECT. THE USER OF THIS DOCUMENT IS ADVISED TO CONSULT WITH AN APPROPRIATE PROFESSIONAL FOR ADVICE ON THE DESIGN AND CONSTRUCTION OF THE PROJECT. THE USER OF THIS DOCUMENT IS ADVISED TO CONSULT WITH AN APPROPRIATE PROFESSIONAL FOR ADVICE ON THE DESIGN AND CONSTRUCTION OF THE PROJECT.</p>
DRAWING NO. 152	SP 16011	SHEET NO.	1																	
SHEET TITLE		AS SHOWN	DATE																	
APPROVED		05/04/17																		
ID, KAIKIA		SPORTS PARKS																		

Recommended Guidelines For Cricket Wicket & Practice Net Construction

Version	Updated Final
Date	August 2016

1.0 Introduction

This document builds upon the Northern Region Grounds persons Guide prepared by the Auckland Cricket Association and New Zealand Sport Turf Institute that has been in place for a number of years.

The guidelines contained in this document are intended as a general guide to the construction of cricket wickets and practice nets.

The document has been designed to be annexed to the Auckland Cricket Grounds Policy which was created from a collaborative process entered into by Auckland Cricket and Auckland Council over the winter months of 2011. *[Updated August 2016]*

2.0 Turf Cricket Wicket Construction

Auckland Cricket can provide advice on all aspects involved with the construction of turf cricket wickets.

It is anticipated that Auckland Cricket, through its Grounds Officer Role, will advise on any wicket construction specifications and provide monitoring support throughout the construction process to ensure the implementation of best practice construction methodology.

3.0 Artificial Cricket Wickets

The majority of cricket in Auckland is played on artificial pitches. Artificial pitches can be laid on different surfaces. The current artificial pitch foundation options include

- (a) Laid on a permanent concrete base (for higher grades of cricket)
- (b) Laid on a hoggin (for lower grades of cricket and allows the surface to be lifted for winter code use)
- (c) Laid on a crushed rock base (newly developed as an alternative to hoggin, can have the option of adding a winter cover + shock pad so winter sport can be played over the wicket.)

3.1 Permanent Concrete Base Cricket Wickets

Where site conditions allow, these guidelines are preferable. Care should be taken to ensure excavation of the pitch is done properly. Levels should be checked to ensure water drains away and ground surface is compatible to wicket levels.

Area Dimensions

The width of a standard cricket wicket is 2.64m. The minimum wicket size recommended is 25m length x 2.7m width – consideration of up to 30m long can also be done at additional cost.

Recommended Guidelines

The recommended guidelines are;

1. Identify appropriate site and take core sample to check soil profile.
2. Survey and excavate site to depth of 200mm, depending on hardness of soil as shown from core sample. Wicket size to be 25m x 2.7m.
3. Box and lay a minimum of 100mm of compacted road base (GAP 20-40) with a fine binding layer (GAP 7 crusher dust or similar) to ensure the surface is level and compact.
4. Stump areas measured and boxed. The distance between the center of each stump area will be 20.12m. Each stump area will be 300mm wide by 100mm in length.
5. Concrete slab will be 100mm thick, will have stealth fiber mixed through or reinforcing steel will be laid. Concrete will consist of 19mm aggregate, 100 slump and be 20 MPA.
6. The concrete slab will be finished with a steel trowel and have a cross fall of 12mm-20mm.
7. The concrete will have 10 days to cure (unless curing speed agent added).
8. A 15mm deep expansion cut will be made at half way (12.5m)
9. Artificial turf to be laid in two halves, grain to face batsmen's end. The half way join must be secured using the manufacturers backing tape. The turf must wrap over the edges of the concrete slab.
10. Edges to be reinstated with spoil and grass seed or turf sod. When conditions aren't suitable for establishing grass from seed or when faster establishment of the turf edges is required, turf sod is recommended.
11. Lines painted with a 25mm brush using white road marking paint in accordance with ACA pitch and boundary marking guidelines.

Recommended Suppliers

Tiger Turf is the recommended supplier for supply and installation.

3.2 Hoggin Base Cricket Wickets

Where site conditions allow, these guidelines are preferable. Care should be taken to ensure excavation of the pitch is done properly. Levels should be checked to ensure water drains away and ground surface is compatible to wicket levels.

Area Dimensions

The width of a standard cricket wicket is 2.64m. The minimum wicket size recommended is 25m length x 2.7m width.

Recommended Guidelines

1. Identify appropriate site and take core sample to check soil profile. Site chosen must be level or made level so the wicket is not compromised at the edges.

2. Survey and excavate site to depth of 60mm. Soil base must be uniform and smooth and inspected for firmness. Compaction maybe needed. Wicket size to be 25m x 2.64m.
3. Lay geo-textile mat (woven road cloth).
4. Stump areas measured and boxed (box width 300mm, depth 100mm, height 50mm – or depth of scoria level. Center of each stump box positioned 10.06m from center of wicket).
5. Fill with GAP 7– compact to 50mm. Rock base must be compacted so it is firm and smooth. Finished surface should have a fall of 12-20mm to allow water to drain off wicket.
6. Fill with Hoggin – compact and level so surface is smooth and has finished height that is 10mm above outfield. Finished surface should have a fall of 12-20mm to allow water to drain off wicket. N.B. Moisture may need to be added to compact Hoggin.
7. If wicket is permanent, bind Hoggin surface using exterior PVA glue. Spray 4L PVA to 20L water evenly over Hoggin surface.
8. Lay waterproof polythene over Hoggin (not required if waterproof artificial turf used)
9. Lay artificial turf (ideally with waterproof backing). Pin and rollout turf from one end to cover the base. Pin sides and remaining end. Use plastic safety nails (pins) at 2 feet intervals (maximum).
10. Edges to be reinstated with spoil and grass seed.
11. Lines painted with a 25mm brush using white road marking paint in accordance with ACA pitch and boundary marking guidelines.

3.3 Crushed Rock Base Cricket Wickets

Where site conditions allow, these guidelines are preferable. Care should be taken to ensure excavation of the pitch is done properly. Levels should be checked to ensure water drains away and ground surface is compatible to wicket levels.

Area Dimensions

The width of a standard cricket wicket is 2.64m. The minimum wicket size recommended is 25m length x 2.7m width.

Recommended Guidelines

1. Identify appropriate site and take core sample to check soil profile. Site chosen needs to be level or made level so the wicket is not compromised at the edges.
2. Survey and excavate site to depth of 75 – 120mm, depending on hardness of soil as shown from core sample. Wicket size to be 25m x 2.7m.
3. Permanent timber rails inserted down the full length of each side about 15mm below the outfield level. Detachable rails added on top to bring the level of the rails to the surface and provide a clean, straight line to work to. The detachable rails are removed at step 8.
4. Lay geo-textile mat (woven road cloth).

5. Fill with GAP 40 crushed rock – compact to 70-80mm (GAP 40 should be approximately 75% of excavated site depth). Add GAP 20 to finished level and compact. As a final touch, add crusher dust (GAP 7) to provide a smooth, even finish to the surface – compact well. Finished surface should have a fall of 10-15mm to allow water to drain off wicket.
6. Test surface with Clegg hammer – readings should be between 180-250 gravities
7. Spray surface with slow-break emulsifier.
8. Remove detachable rails once the surface has dried.
9. Lay biddum cloth over the dried surface as an intermediary between the surface and the artificial top.
10. Artificial turf to be laid in two halves, grain to face batsmen's end. The half way join must be secured using the manufacturers backing tape. The top is nailed into the side rails and pinned into the soil at the ends.
11. Fill soil to the edges so that the wicket is flush with the outfield and seed or turf sod to reinstate turf cover. When conditions aren't suitable for establishing grass from seed or when faster establishment of the turf edges is required, turf sod is recommended.
12. Final readings on Clegg hammer should be between 150-200 gravities. Please note that if a winter cover is not to be used then higher gravities can be accepted.
13. Lines painted with a 25mm brush using white road marking paint in accordance with ACA pitch and boundary marking guidelines.

Recommended Suppliers

Tiger Turf is the recommended supplier for supply and installation.

4.0 Practice Nets

Auckland Cricket can provide advice on all aspects involved with providing practice nets.

Area Dimensions

The width of a standard practice net lane is 3.6m. This is a minimum. The recommended total length of the practice net foot print is 25m. The minimum length of the concrete pad is 15m.

Site

1. Chosen site will total 25m in length and the width will depend on how many lanes are needed. Lanes will total 3.6m in width
2. Site stability will be determined to then allow for depth of excavation.

Concrete Slab (batters end)

3. The length of the slab will be 15m long.
4. Road base aggregate (GAP 20-40) will be compacted to a depth that is suitable to the site.
5. Damp proof cloth laid over road base.
6. The slab will be 100mm thick concrete with mesh.
7. Each lane will have a 12mm cross fall.
8. High quality smooth trowel finish
9. Quality of astrograss will depend on user but must be the entire width of the lane and grain of the grass must be laid towards the batsmen's end.

Bowlers Run Up

10. This should be 10m, making up the total length of 25m.
11. This area must join flush with the concrete and extend 5m past the stumps at the bowlers end
12. Sub base will be 150mm of compacted road base aggregate (GAP 20-40).
13. Durable all weather sand filled astrograss will be laid and nailed to the boxing.

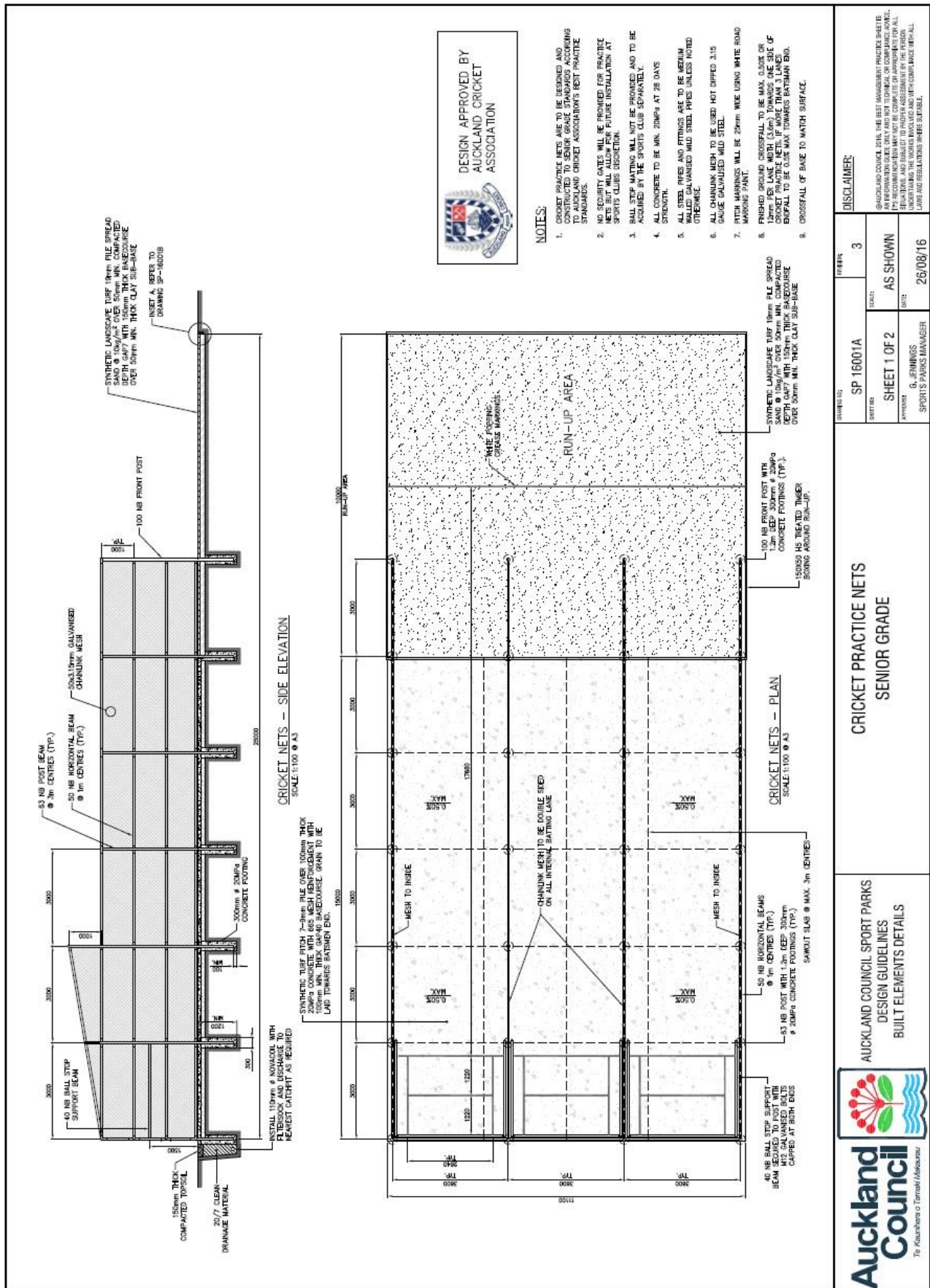
Netting

14. The sides will extend 3m above the finished slab height and will consist of heavy galvanised chain link mesh (50x2.5mm) and will run the entire length of the concrete slab. If there are multiple lanes the dividing sides must be 18m in length to protect the bowlers in the other lanes.
15. Roof will extend 6m from the back side and will consist of standard galvanised chain link mesh (50x2.5mm)

Marking

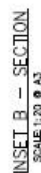
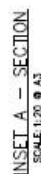
16. Pitch markings will be using a 25mm brush using white road marking paint in accordance with ACA pitch and boundary marking guidelines.

Appendix B





1. CROCKET PRACTICE NETS ARE TO BE DESIGNED AND CONSTRUCTED TO SENIOR GRADE STANDARDS ACCORDING TO AUSTRALIAN CRICKET ASSOCIATION'S BEST PRACTICE STANDARDS.
2. NO SECURITY TENTS WILL BE PROVIDED FOR PRACTICE NETS BUT WILL ALLOW FOR FUTURE INSTALLATION AT SPORTS CLUBS DISCRETION.
3. BALL STOP MATING WILL NOT BE PROVIDED AND TO BE ACQUIRED BY THE SPORTS CLUB SEPARATELY.
4. ALL CONCRETE TO BE MIN. 200MM AT 28 DAYS STRENGTH.
5. ALL STEEL PIPES AND FITTINGS ARE TO BE MINIMUM 100mm GALVANIZED MILD STEEL UNLESS NOTED OTHERWISE.
6. ALL CHAINING MEAN TO BE USED HOT DIPPED 3.15 GAUGE GALVANIZED MILD STEEL.
7. PITCH MARKINGS TO BE 25mm WIDE USING WHITE ROAD MARKING PAINT.
8. FINISHED GROUND CROSSFALL TO BE MAX. 0.5% OR 12mm PER LINE WIDTH (3.6m) TOWARDS THE SIDE OF CROCKET PRACTICE NETS. FUTURE TO BE 3 LINES CROSSFALL TO BE 0.5% MAX TOWARDS BATSMAN END.
9. CROSSFALL OF BANK TO MATCH SURFACE.



CRICKET PRACTICE NETS
SENIOR GRADE

DRAWING NO:	SP 16001B	REVISIONS	3
SHEET NO:		AS SHOWN	
PROJECT NO:	19/08/2016		

DISCLAIMER:

SHAWKLAND COUNCIL, 2016. THIS BEST MANAGEMENT PRACTICE SHEET IS AN INFORMATIONAL GUIDE ONLY AND NOT TECHNICAL OR COMPLIANCE ADVICE. THIS RECOMMENDATION MAY NOT BE COMPLETE OR APPROPRIATE FOR ALL SITUATIONS, AND SHOULD BE USED TO PROMPT ASSESSMENT BY THE PERSON UNDERTAKING THE WORKS INVOLVED AND WITH COMPLIANCE WITH ALL LAWS AND REGULATIONS WHERE APPLICABLE.

Auckland Cricket Grounds Policy

May 2017

CONTENTS

<u>1.0 Introduction</u>	43
<u>2.0 Roles and Responsibilities</u>	44
<u>3.0 Performance Standards and Expected Outcomes</u>	45
<u>3.1 High Performance</u>	45
<u>3.2 Men's Premier & Premier Reserve Grade and Women's Premier Grade</u>	46
<u>3.3 Other Club and Social Grades</u>	47
<u>3.4 Mown Outfield Wickets for Midget Cricket</u>	47
<u>4.0 Artificial Pitches</u>	48
<u>4.1 End of Season Review of Existing Pitch Conditions and Maintenance</u>	48
<u>4.2 Installation of new Artificial Pitches</u>	48
<u>4.3 Performance Standards for Artificial Pitches</u>	49
<u>5.0 Remedial Process when Standards Not Achieved</u>	49
<u>6.0 Contractors Obligations and General Turf Practice</u>	50
<u>7.0 Club Support</u>	51
<u>8.0 Conclusion</u>	52

1.0 Introduction

Every summer over 40,000 Aucklanders play our national summer game. Auckland Cricket organises competitions to cater to all ages and levels of ability. The vast majority of these competitions are played on grounds owned and maintained by Auckland Council.

It is the joint responsibility of Auckland Cricket and Auckland Council to provide a quality recreational experience to these thousands of participants. The preparation and maintenance of the playing fields and pitches to a suitable standard is a prerequisite for this quality recreational experience.

This document is the product of a collaborative process entered into by Auckland Cricket and Auckland Council over the winter months of 2011. It sets out the desired outcomes that have been agreed by both parties, together with the recommended processes by which these outcomes are to be achieved.

In doing so it recognises the key roles to be played by a number of parties in achieving this goal – most notably the Contractors engaged by the Council to maintain the parks, the Groundsmen employed by these contractors to deliver this service and the cricket clubs based at the principal cricket grounds.

This document builds upon and replaces the previous Auckland Cricket Wicket and Grounds Management Specification that had been in place for a number of years. This specification had been used as the basis for creating management agreements with each of the previous five City Councils. Each of these agreements had contained different specifications which was less than ideal and lead to different quality standards in different areas. With the creation of the new Super City the opportunity now exists to deliver one consistent standard across the wider city and this document sets out that standard clearly for all parties involved.

This document has been designed as an easy to read overview that can be distributed to all key stakeholders and used as a reference point for agreed specifications. Annexed to this document are highly detailed and specialised management specifications which will form the basis of the contractual agreement between the Council and its contractors. In addition Auckland Cricket also supplies a specialist publication for groundsmen called “Cricket Wicket Preparation” which is now widely regarded as the industry textbook for cricket pitch and field preparation.

It is anticipated that this document, together with the Auckland Council Management Specifications, will form the basis of the relationship between Auckland Council and Auckland Cricket for the next four year period. Upon request from either party these documents may be reviewed in April each year with a view to making any necessary updates and/or amendments.

2.0 Roles and Responsibilities

There are several key parties involved in the preparation of cricket grounds and it is important that each party plays its role while at the same time respecting and assisting the roles played by the other parties. What follows is a brief description of the parties involved and the roles they play

Auckland Cricket – Auckland Cricket is one of six cricket Major Associations affiliated to New Zealand Cricket. It is a not for profit association charged with delivering cricket to the wider Auckland region at both a grass roots and professional level. In doing so it must organise competitions and grounds for the growing number of participants that wish to play cricket each summer.

Auckland Council – Auckland Council is the largest single urban territorial authority in Australasia. It is charged with providing a wide range of services to its rate payers, and included in these services is the provision of suitable sport and recreation facilities to meet rate payer demand.

Auckland Council owns and maintains a wide range of public parks and sports fields and must determine how these fields are allocated and maintained. In doing so they have a dedicated Local and Sports Parks Division and within this department there are five Area Managers who are charged with managing the contracts and the maintenance and use of the sports fields.

Council Contractors – Auckland Council engages independent contractors to provide the required maintenance services for its sport fields. The level of work required dictates that more than one contractor is required and contracts are generally allocated on a regional basis. At present the responsibility for the maintenance of cricket wickets is spread across four contractors being Urban Maintenance Systems (UMS), City Parks, Ventia and City Care.

In allocating these contracts Auckland Council is required to balance the requirement to provide a comprehensive and quality service to its rate payers against the need to control costs. To achieve this it is important that there is a clear understanding of the standards expected from contractors and the methods required to meet these standards.

Groundsmen – The Council Contractors will employ dedicated Groundsmen to prepare and maintain cricket wickets and outfield. While there are many parks hosting cricket across the Auckland region, the key grounds are those of the 16 principal clubs that play in the Auckland Cricket Premier Club competition.

Producing and maintaining quality grass cricket pitches and outfield is an art rather than a science. This is especially so in Auckland where our climate presents a number of additional challenges. It is also a time and labour intensive task and requires a degree of passion and flexibility from those charged with the work.

The groundsmen in charge of each of these grounds will be the biggest single factor in determining the quality of the pitches and outfield. To achieve the required standards they will require the support of all other parties.

Eden Park Trust – Turf culture in relation to cricket pitches and outfield is a specialist area where a high degree of expertise is required. It is also not an exact science and it is important that processes and outcomes are monitored regularly to ensure that any problems can be dealt with promptly. Auckland Cricket and Auckland Council will from time to time agree as to who is the most appropriate independent party to provide such expert advice, and the nature and extent of such advice that will be sought. The Eden Park Trust is currently engaged in this role.

Clubs – The cricket clubs and their members are the ultimate end users of the fields and pitches provided. They have two crucial roles to play in this area. Firstly they need to work closely with their groundsman to provide support and assistance as required. This is especially so when the groundsman is relatively inexperienced. The relationship between the club and the groundsman will be crucial to achieving positive outcomes.

The clubs must also provide constructive feedback to Auckland Cricket on the standard of their pitches and outfield. This will be done through standardised Grounds Reports which are to be submitted after each (premier) game.

More specific club obligations and responsibilities are set out in Section 7.0 of this document. Auckland Council will also enter into a 'Council-Club Service Agreement' with each Principal Club based on a Council Park. These agreements will provide greater detail regarding the use of that particular park and any operational arrangements between the club and the Council.

3.0 Performance Standards and Expected Outcomes

The performance standard required under these specifications will vary dependant upon the type of cricket played on the ground / pitch.

The following categories of turf wicket block and outfield usage are defined:

Description	Category
High performance and Age Group	1
Premier, Premier Reserve and Women's Premier Grade	2
Other club, school, social grades	3
Mown strips for midget cricket	4

The general Performance standards expected for category 1, 2, 3, & 4 pitches and outfield are outlined below.

3.1 High Performance

General Description – These will be special matches organised by the Auckland Cricket High Performance Department. They will be played on Premier Cricket grounds but the standard required will be at the very higher end of the standards required for Premier Grounds under Category 2 below.

3.1.1 Pitch Standard

The pitch will display the following characteristics;

- Good to average carry, little or no seam movement and consistent bounce throughout
- Little to no spin initially, with some turn towards end of game
- Medium fast pace
- Good grass covering with no weeds or slime
- Clear markings
- High level of availability for play due to covering before and during play

Detailed specifications as to how these characteristics are to be achieved are set out in the Auckland Council Management Specifications

3.1.2 Outfield Standard

The outfield on match day will display the following characteristics'

- Grass cut to suitable level
- Even surface allowing smooth roll of ball
- Good drainage
- Clear boundary and infield markings

Detailed specifications as to how these characteristics are to be achieved are set out in the Auckland Council Management Specifications

3.1.3 Monitoring and Assessment

An Auckland Cricket Grounds Report will be completed each week by the users of each ground. These reports will assess the ground against these characteristics on a scale of 1-5. A score of 4 or above will be regarded as meeting the expected Performance Standard.

3.2 Men's Premier & Premier Reserve Grade and Women's Premier Grade

General Description – These matches are the top level of Auckland Club Cricket and need to be played on high standard grass pitches. These will generally be situated on the 16 principal club home grounds and Melville Park.

3.2.1 Pitch Standard

The pitch will display the following characteristics;

- Average carry, minimal seam movement and mostly consistent bounce throughout
- Little to no spin initially, with some turn towards end of game
- Medium pace
- Good grass covering and no weed or slime
- Clear markings
- High level of availability for play due to covering

Detailed specifications as to how these characteristics are to be achieved are set out in the Auckland Council Management Specifications

3.2.2 Outfield Standard

The outfield on match day will display the following characteristics

- Grass cut to suitable level
- Even surface allowing smooth roll of ball
- Good drainage
- Clear boundary and infield markings

Detailed specifications as to how these characteristics are to be achieved are set out in the Auckland Council Management Specifications

3.2.3 Monitoring and Assessment

An Auckland Cricket Grounds Report will be completed each week by the users of each ground. These reports will assess the ground against these characteristics on a scale of 1-5. A score of 3 or above will be regarded as meeting the expected Performance Standard.

3.3 Other Club and Social Grades

General Description – These matches are a lower level of Club Cricket and turf pitches will generally be uncovered. They will be played on a range of grounds throughout Auckland and while the standard required is lower than that in Category 2 it is important for both safety and enjoyment reasons that a level and consistent playing surface is provided. Over time more games in this category will be played on artificial rather than turf pitches.

3.3.1 Pitch Standard

The pitch will display the following characteristics;

- Consistent medium bounce
- Reasonable pace
- Good grass covering and minimal weed and slime
- Clear markings

Detailed specifications as to how these characteristics are to be achieved are set out in the Auckland Council Management Specifications

3.3.2 Outfield Standard

The outfield on match day will display the following characteristics;

- Grass cut to suitable level
- Reasonably even surface allowing smooth roll of ball
- Good drainage
- Clear boundary markings

Detailed specifications as to how these characteristics are to be achieved are set out in the Auckland Council Management Specifications

3.3.3 Monitoring and Assessment

There is no formal feedback process for grounds in Category Three. Where a ground consistently fails to meet the required standards the onus is on the clubs that use the ground to raise this issue with Auckland Cricket.

3.4 Mown Outfield Wickets for Midget Cricket

General Description - These mown outfield wickets are only used for young children between 5-8 years old playing modified versions of the game with a soft incrediball. It is imperative that the surfaces they play on are conducive to providing a quality first-time cricket experience so these young players enjoy the game, develop their skills and want to keep playing in future years.

3.4.1 Pitch Positioning

Mown outfield wickets should be positioned in flat, even areas of the outfield to ensure even ball bounce.

3.4.2 Grass Height

Pitches should be mowed weekly (as late in the week as possible) at a height of about 10mm to provide a noticeable differentiation from the regular outfield height.

3.4.3 Marking Creases

Creases are to be marked with white paint each week. The marking shall be clear and discernible at all times. Pitch length will depend on the requirements of the users, i.e. the local club.

3.4.4 Boundaries

Boundaries should not be marked. Some midget matches do not play with any boundaries, alternatively cones can be used.

3.4.5 Pre-season preparation

It is recommended that these outfield wicket areas are given a light scarification, seed is broadcast and then the area top-dressed in the early spring to ensure a strong covering of grass. A week prior to the start of the season it is then recommended that the wickets are given a 10-15 minute roll each to smooth the surface and take out any winter sports footmarks etc. Given these wickets do get heavy traffic, it is also suggested that every 6-10 weeks (when rainy conditions allow), the area is fertilised to strengthen grass coverage.

4.0 Artificial Pitches

The majority of cricket in Auckland is played on artificial pitches. The standard of these pitches varies from those situated on Premier Grounds, down to those used for junior cricket. While the main focus of cricket field preparation centres on turf pitch blocks and outfields, it is also very important that these artificial pitches are maintained at a high standard to ensure a long life and safe playing conditions.

Artificial pitches can be laid on different surfaces and research is currently underway to investigate how artificial pitches can be made more compatible with winter sporting codes.

The current artificial pitch foundation options include;

- Laid on a permanent concrete base (for higher grades of cricket)
- Laid on a hoggin (for lower grades of cricket and allows the surface to be lifted for winter code use)
- Laid on a crushed rock base

In addition to these options a winter pitch cover has been developed which will allow winter codes to play over an artificial pitch that has been laid on hoggin or crushed rock. These covers could potentially open up availability for cricket of a significant number of grounds that were previously used for winter codes only.

4.1 End of Season Review of Existing Pitch Conditions and Maintenance

At the end of each playing season the contractors will assess the condition of all artificial wickets and determine any remedial action needed including when a totally new surface is required. Patching and other maintenance work should be identified in April and completed by the end of September. In determining the best time to complete this work it will be important to consider winter sports code use and how access may be affected by weather.

4.2 Installation of new Artificial Pitches

At the end of each season Auckland Cricket, in consultation with Auckland Council, will assess the need for any new artificial pitches on Council fields. Installation of new non-concrete based artificial wickets

shall only be undertaken using job specs approved by Auckland Cricket and approved artificial pitches surfaces. The relevant specifications are attached in Appendix A. All work shall be undertaken by approved contractors familiar with these specs.

Bases for roll-up wickets (e.g. Auckland Domain) shall be properly installed and tested for appropriate hardness levels before the artificial surface is laid over the top. Hardness levels should be tested a further two times during the season to ensure they are maintained with any remedial action taken if necessary.

4.3 Performance Standards for Artificial Pitches

4.3.1 Artificial Pitches on Category One Grounds

High Performance and Age Group Grade cricket will not be played on artificial pitches.

4.3.2 Artificial Pitches on Category Two Grounds

Artificial pitches on Category Two grounds will display the following characteristics

- Concrete base of agreed dimensions
- Good condition artificial playing surface as specified in Appendix A
- Level edging and surrounds
- Clear markings
- Stump holes which support stumps

4.3.3 Artificial Pitches on Category Three Grounds

Artificial pitches on Category Three grounds will display the following characteristics

- Variety of approved base types
- Good condition artificial playing surface as specified in Appendix A
- Reasonably level edging and surrounds
- Clear markings
- Stump holes which support stumps

4.3.4 Outfields

The outfield standards for grounds with artificial pitches are the same as those for grounds with turf pitches under Category One, Two and Three.

4.3.5 Monitoring and Assessment

The monitoring and assessment of artificial pitches on Category Two and Three grounds will be conducted through to the same process as that in place for turf pitches.

5.0 Remedial Process when Standards Not Achieved

The nature of cricket pitch and outfield preparations are such that from time to time the agreed standards will not be achieved. It is important when this happens that all parties work together to rectify any problems in a constructive way. The agreed process is as follows:

Any user dissatisfaction is communicated by the club to the Auckland Cricket Community Cricket Manager via the formal ACA Ground Report (Category One and Two) or by an email from the Club Manager (Category Three or Four) by 5.00pm on the Monday following the match.

By 5.00pm on the Tuesday following the match the Auckland Cricket Community Cricket Manager and the Auckland Cricket Grounds Consultant will meet to review all reports received and determine the appropriate level of action.

Depending upon the seriousness and the frequency of the issue raised it will fall into one of three broad categories and the appropriate level of remedial action is set out as follows:

For relatively minor issues that are easily dealt with the Auckland Cricket Community Cricket Manager and/or Grounds Consultant will contact the relevant groundsman and agree a course of action. A short email will also be sent to the Contractor advising of the issue and action taken.

For more serious issues, or relatively minor issues that are occurring regularly, Auckland Cricket shall notify the Contractor as well as the groundsman and if necessary shall arrange an onsite meeting that week to agree a course of action. Should an onsite meeting take place the Club shall be notified and given the opportunity to attend. A short email should be sent to the Council Turf Advisor advising of the issue and the action taken.

For the most serious issues an onsite meeting involving the Council Turf Advisor, Contractor, Groundsman, Club Manager, Auckland Cricket Grounds Consultant and Auckland Cricket Community Cricket Manager shall be arranged that week to agree a course of action. Such a meeting will be deemed necessary when there is an issue that will severely impact the Contractor's ability to continue to meet the expected performance standards and outcomes and where there are likely to be cost implications in dealing with the issue.

In addition to the above customer based outcome feedback, Council will also instigate its own form of quality assurance and/or audit with the Contractor to ensure the processes set out in the Auckland Council Management Specifications are being followed.

6.0 Contractors Obligations and General Turf Practice

The overall brief is to prepare wicket blocks to the appropriate performance standards for games programmed by the Auckland Cricket Association and its affiliates.

The Contractor will be expected to undertake diligently and supervise the work described below to keep the turf and/or artificial wicket blocks and outfield in a suitable condition for play during the cricket season.

This work will generally encompass the management and execution of the following broad areas and specific management requirements for each area are set out in the Management Specifications.

Spring and Autumn renovations	Patching
Winter care	Irrigation
Mowing	Marking
Fertilising	Appropriate disease/pest control
Rolling	Match day preparation
Covering	

The Contractor will generally carry out the work by utilising recognised turf culture practices that are acceptable to all stakeholders. Guidelines as to accepted practice are set out in the Auckland Cricket Association handbook "*Cricket Wicket Preparation*" together with the 'Auckland Council Management Specifications'.

The Contractor will supervise the work using staff with approved Turf Cultural qualifications and/or experience in cricket wicket management. It is very important that experienced ground staff are appointed to the home grounds of principal club grounds maintained by the Council, and that where experienced grounds staff are not available a suitable mentoring and education program is put in place for less experienced ground staff. Innovative practices are acceptable provided match day performance standards are met.

Auckland Cricket, through its Grounds Consultant, will provide education and training opportunities in addition to the professional development offered by the Contractor. The importance of Ground Staff taking advantage of these opportunities is acknowledged by all parties. In addition Auckland Cricket and its principal clubs will put in place measures to encourage and motivate grounds staff and work with Auckland Council and the Contractors to make the cricket ground staff profession as attractive as possible.

The Contractor will programme the renovation of the turf wicket blocks in order to achieve a dense sward of amenity ryegrass on a level surface that is suitable for playing cricket of all grades during the playing season. Renovation programmes will be actioned during the periods 31 March to 15 May (autumn) and 31 August to Labour weekend (spring). The spring programme is aimed at addressing any limitations not covered during autumn. Weather conditions may delay work during these periods, but the contractor will ensure work proceeds when weather permits, to ensure cricket outfielders are playable by Labour Weekend.

Auckland Cricket expects that on playing days, Contractors will make suitable staff available at turf wicket venues to ensure playing time is maximised. This generally means that on playing days the ground staff will remain at the ground until the ground is handed over to the umpires. Specific conditions of this involvement may vary from ground to ground and should be set pre-season in the Council – Club Service Agreement

7.0 Club Support

It is very important that cricket clubs understand the challenges involved in pitch preparation and that they work closely with their ground staff to assist them in whatever ways may be possible.

This is particularly the case in regards to pitch covering. Inefficient use of covers can lead to play loss of play due to rain when covers are not put on or taken off too early, but also to damage to the pitch block when covers are left on too long.

The Ground Staff have obligations to ensure pitches are covered as set out in the Auckland Council Management Specifications. However the nature of Auckland weather, combined with the fact that ground staff are not based permanently at one ground, will mean that ground staff alone will not be able to provide optimal use of the covers at any principal club ground. It is very important that each club understands this and agrees with their ground staff how they will assist in this area. This understanding should be set out in each Council-Club Service Agreement.

The relationship between the club and the ground staff will be one of the key factors in producing high standard pitches and grounds. All principal clubs should appoint a dedicated Grounds Officer to liaise with and support their Grounds Man. The Auckland Cricket Club Playing Conditions contain details setting out the roles and responsibilities of the Club Ground Officer.

8.0 Conclusion

These criteria have been set so that suppliers of grounds understand the requirements for Auckland Cricket and to provide users with a greater awareness of ACA expectations.

The specific details are provided to help all parties understand what is fair to all suppliers and users.

Parties affected by these criteria may request clarification or review of them at any time.